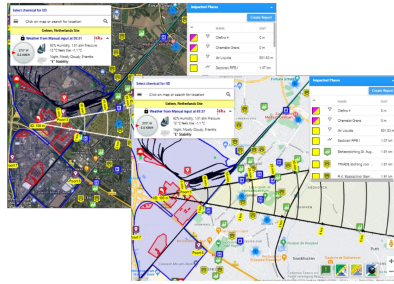




CERES 2.7 - Release Notes

Prepare, Respond, Analyze
Anytime, Anywhere, Any Device



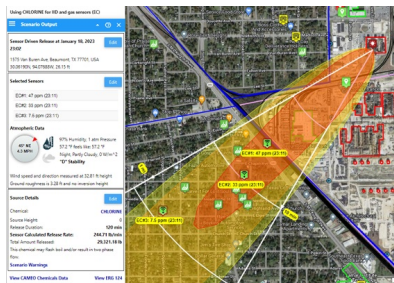
New ! - Offline Mode

To address losing internet connectivity, CERES includes seamless **online / offline transition and data synchronization**. Custom satellite imagery and GIS data can also be used in Offline Mode.

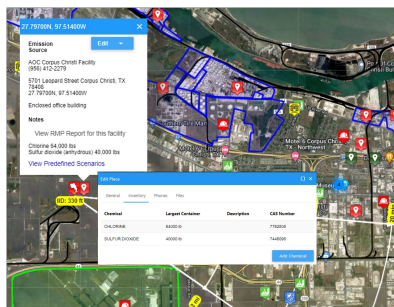


New ! - Honeywell Safety Suite Real Time Data Integration

CERES can receive live data from **Safety Suite** for the RAE family of sensors, including AreaRAE Pro/Plus and MultiRAE.



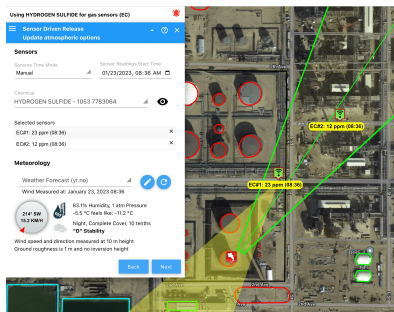
CERES **simultaneously** incorporates data from Blackline Safety, Honeywell, and fixed sensors to support monitoring and alarming functions, and feed the Sensor Driven Plume (SDP) and Sensor Location Identification (SLID) algorithms.



Update ! - Chemical Facilities Inventory Management

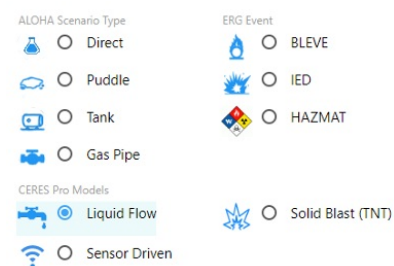
Import, update and manage **Tier II, RMP, SEVESO, COMAH, and E2** inventories and company data, with address, location, contact info and reference docs.

CERES **auto-generates scenarios** based on the facility chemical inventory.



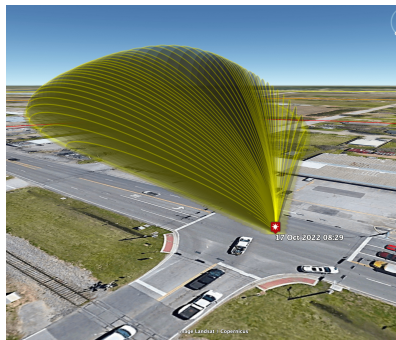
New ! - Sensor Deployment

CERES provides guidance for sensor deployment using current live meteorological conditions, to **eliminate guesswork** and optimize sensor placement for monitoring and for feeding data to the Sensor Driven Plume algorithm.



New ! - Liquid Flow Release

A new "Liquid Flow Release Model" has been implemented to model the hazard generated during incidents with non-pressurized liquid releases, where a **growing puddle** has been formed.



New ! - NetCDF Data Export Functionality

CERES can export model results to "netCDF", (Network Common Data Format). NetCDF is a globally accepted, input / output format standard for meteorological and GIS applications and sharing multi-dimensional, scientific data.

[Lean more from CERES Fact Sheet](#)

Use the Desktop / Web Version

Free iOS App



Free Android App



Vlahi Systems LLC
17171 Park Row, Suite 247
Houston TX 77084
www.vlahi.com

You received this email because you are a chemical emergency responder, planner, compliance officer or ALOHA user registered with CERES and Vlahi Systems LLC

[Unsubscribe here](#)

© 2019-2022 Vlahi Systems LLC